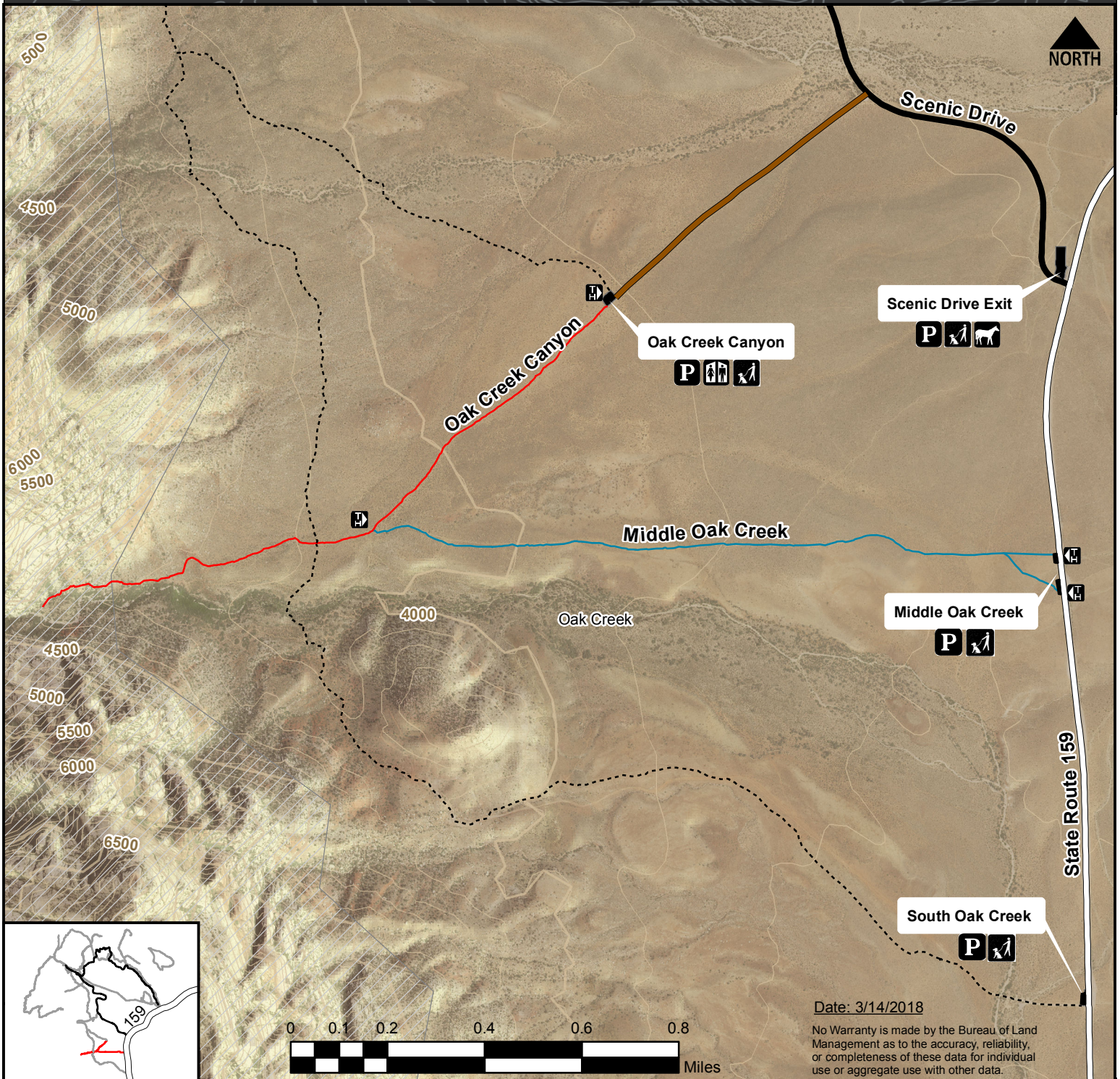




Oak Creek Canyon Trail Head: 22. Oak Creek Canyon 23. Middle Oak Creek



Date: 3/14/2018

No Warranty is made by the Bureau of Land Management as to the accuracy, reliability, or completeness of these data for individual use or aggregate use with other data.

Legend

- | | | | |
|---------------------|--------------------------|---------------------------------------|---------------------------------------|
| Parking | Horse trailer accessible | 22. Oak Creek Canyon | 23. Middle Oak Creek |
| Restrooms | Scenic Drive | Elevation: 3907' (low) - 4321' (high) | Elevation: 3816' (low) - 4055' (high) |
| Trail access point | Existing trails | Distance: 3 mi / 4.82 km out and back | Distance: 3 mi / 4.82 km out and back |
| Leashed pets | Dirt road | Average time: 1.5 hrs | Average time: 3 hrs |
| Wilderness boundary | State Route 159 | Difficulty: EASY | Difficulty: MODERATE |
| | | Trail uses: | Trail uses: |
| | | Horse trail | Horse trail |
| | | Hiking | Hiking |